



6/33 Queens Road MELBOURNE

2  **1**  **1** 

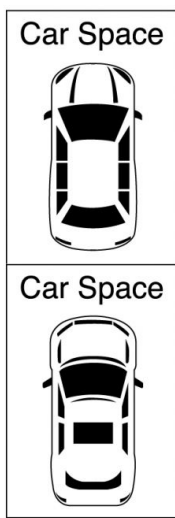
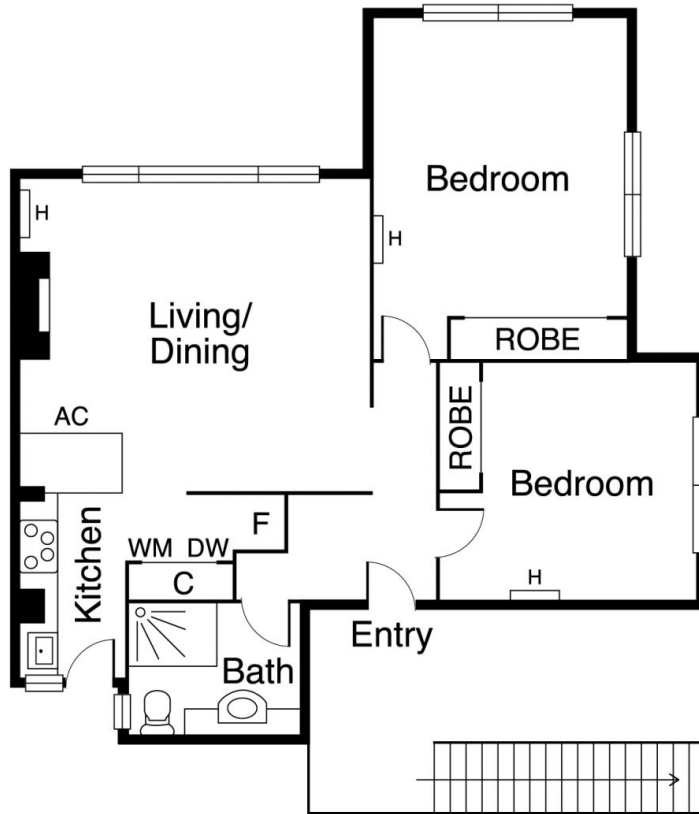
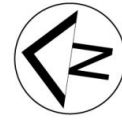
Tudor Influence and Art Deco Design Blend in Perfect Harmony!

Quietly located at the rear of the tightly held "STANHILL" block off Queens Lane, this stunning, 2 bedroom, top floor Art Deco/ Tudor apartment is sure to impress! North facing and filled with natural light, the entrance hall takes you to the open plan kitchen, living, dining which is filled with an abundance of period detailing including open fire place, deco ceiling roses, wooden floors and lead light windows. The bathroom and kitchen are both fully renovated. Kitchen with stone benchtops, Bosch induction cooktop and dishwasher as well as laundry facilities. The location is so central, you can walk to Albert Park Lake, jump on a tram straight to the CBD, take a stroll in Fawkner Park, enjoy Windsor and South Yarra bars, shops and famous eateries and at the end of the day, park two cars securely.

\$ 680,000

Graeme Wilson
0418315645
gwilson@wilsonagents.com.au

Grace Le-Francke
0419379998
glefrancke@wilsonagents.com.au



(Not To Scale and
Not In Position)

This plan has been prepared for marketing purposes only. Please note that all measurements & angles are approximate only, so it is strongly advised that all interested parties should undertake their own investigation into the accuracy of the supplied information. No representations or warranties of any nature whatsoever are given or intended.