



8/129-133 Ormond Esplanade ELWOOD

2 1 1

Ground Floor, Walking Distance, Perfect for Mum or Dad

\$ 685,000

This stylish, secure ground floor apartment by award winning Fooks Martin Sandow architects is perfectly positioned at the rear of the development to quiet Kingsley Street on the golden mile of Elwood.

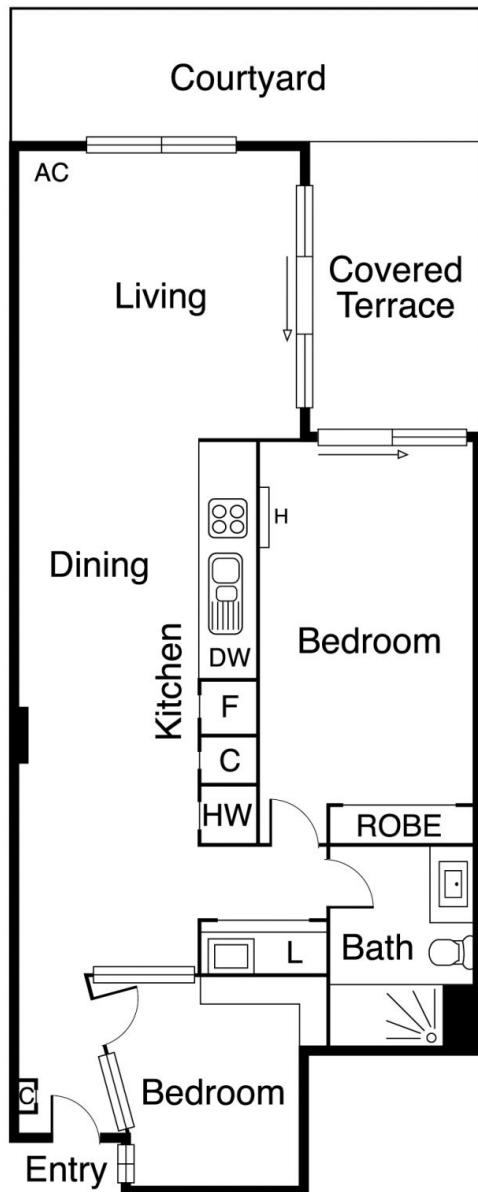
Enjoy life with everything at your fingertips, walk to the beach, Elwood village shops and cafes and Elsternwick park. Sophisticated interiors reveal gallery style wall space, open plan living/dining and well-appointed kitchen with stone benchtops, SMEG oven, dishwasher and integrated liebherr fridge flowing through to a rear courtyard with covered entertaining area perfect for indoor-outdoor BBQ's with friend and family.

Spacious master bedroom suite with BIR and courtyard access. Split system heating/cooling, Euro laundry, and security intercom, basement parking with lift access & storage cage. Perfect for buyers seeking low maintenance living with the best of Elwood at your fingertips.

Graeme Wilson
0418315645
gwilson@wilsonagents.com.au

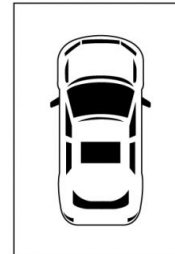
Grace Le-Francke
0419379998
glefrancke@wilsonagents.com.au

8/129 Ormond Esplanade, Elwood



Storage
Cage

Secure Basement
Car Space



(Not To Scale and
Not In Position)