



5/2 Erindale Avenue RIPPONLEA

2 **1** **1**

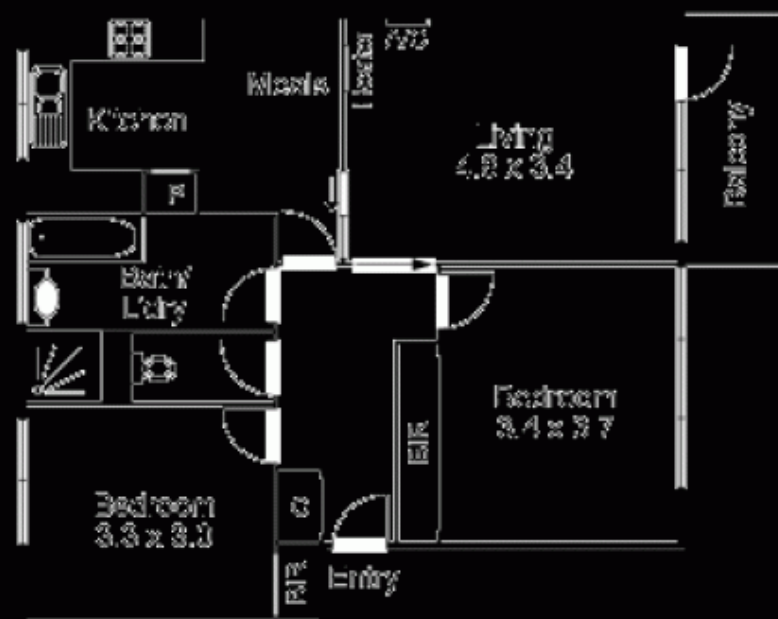
Large Lifestyle Living

In a boutique block of only seven close to Ripponlea station, Brighton Road trams and great local shopping, this light-filled north facing updated apartment provides a great opportunity. Comprising, large living / dining opening to a balcony enjoying the beautiful streetscape, kitchen with meals area, stainless steel appliances and dishwasher; Two double bedrooms, each with robes and superb bathroom network with laundry facilities, separate shower, bath and toilet. Other Features include split system air-conditioning, gas heating, and Under-cover car parking. Invest in or enjoy an apartment of compelling quality!

\$ 610,000

Joey Eckstein
0419 419 199
jeckstein@wilsonagents.com.au

Norma Evans
0422844666
nevans@wilsonagents.com.au



Carport
(Not in Profile)