



26/23 Mitford Street ST KILDA

2 **2** **1**

Village Belle Beauty!

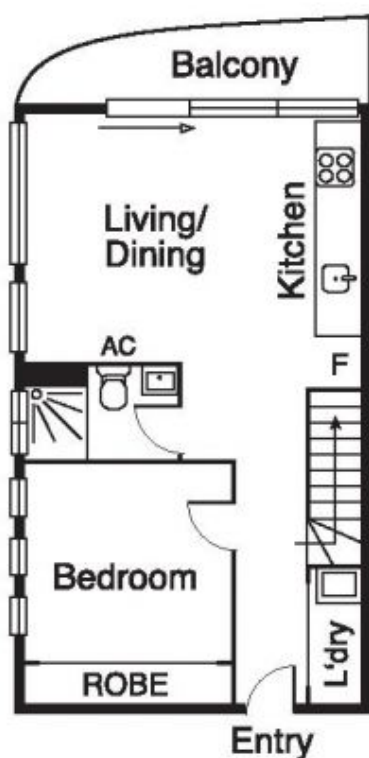
Positioned quietly at the rear of a boutique block this split-level, light filled, north facing home is the perfect St Kilda Beach oasis! Occupying the top two levels, the floorplan presents the perfect separation of spaces. The king sized master bedroom suite occupies the entire top level with an abundance of built in robe storage, a private ensuite bathroom, a sun drenched terrace and a separate storage room. Downstairs comprises a well-appointed kitchen with Blanco appliances, stone benches and ample cupboard space, open plan living, European laundry and centrally located bathroom. Additional features include; reverse cycle heating/cooling, storage cage, intercom security entry, secure remote basement parking with direct lift access and more! Positioned on the border of Elwood and St Kilda you are just moments from the Botanical gardens, Acland Street shops and cafes, St Kilda Beach and all transport options direct to the CBD!

\$ 720,000

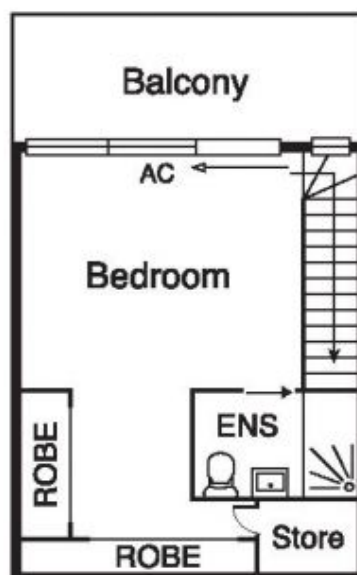
Grace Le-Francke
0419379998
glefrancke@wilsonagents.com.au

Graeme Wilson
0418315645
gwilson@wilsonagents.com.au

26/23 Mitford Street, St Kilda



Lower Level



Upper Level



(Not To Scale and
Not In Position)