

5/95 Wellington Street ST KILDA

2 **1** **1**

Industrial Style with Indoor-Outdoor Wow!

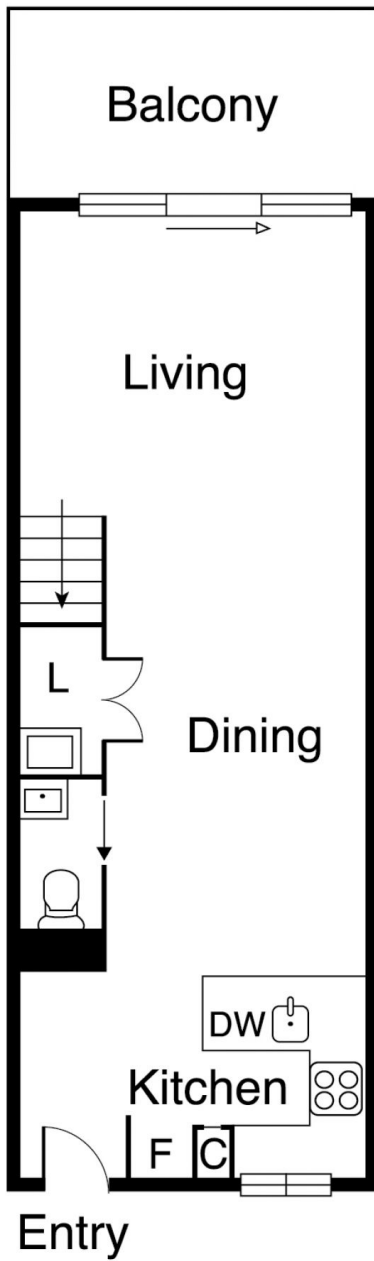
Nothing beats brand new and nothing beats the inspiring spaciousness, innovative design and superlative location of this tri-level apartment.

Showcasing a sleek and edgy design, the high quality home culminates in a spectacularly large rooftop terrace capturing widespread that stretch across the iconic pink elephants crowning the Windsor Hotel and over towards the city. It's the perfect venue to relax at wine o'clock as the sun goes down or catch up with friends while the steaks sizzle on the built-in barbeque.

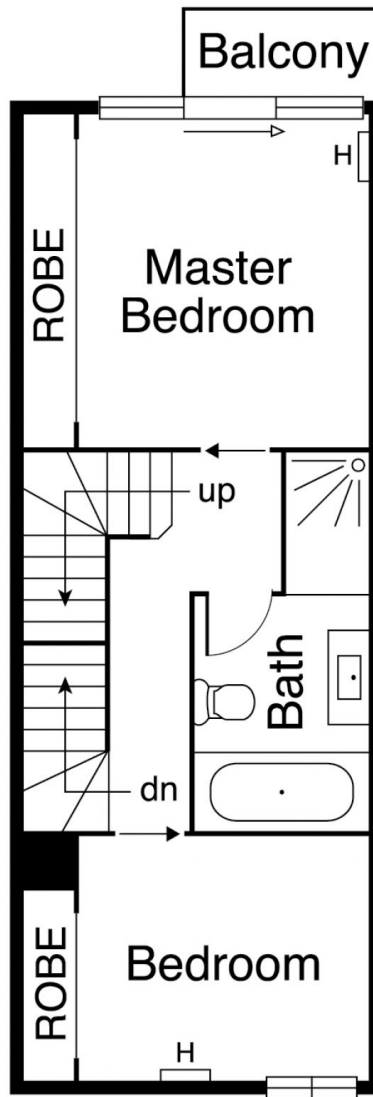
Enjoying attractive leafy views, the living and dining room extends outside to a covered balcony. Practically planned for efficient meal preparation, the kitchen is appointed with stone benchtops and Smeg appliances. The two bedrooms include a main bedroom with personal balcony and an equally generous second bedroom enjoying city views. Both are fitted with mirrored robes and are serviced by a stylish bathroom.

Elevated in an aesthetically appealing block of just ten, the unique home also features a powder room, European laundry tucked away under the stairs, car space, ducted heating and cooling, reverse-cycle air conditioner, a storeroom and sink on the terrace and

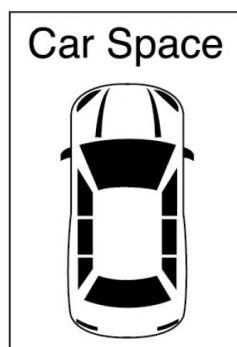
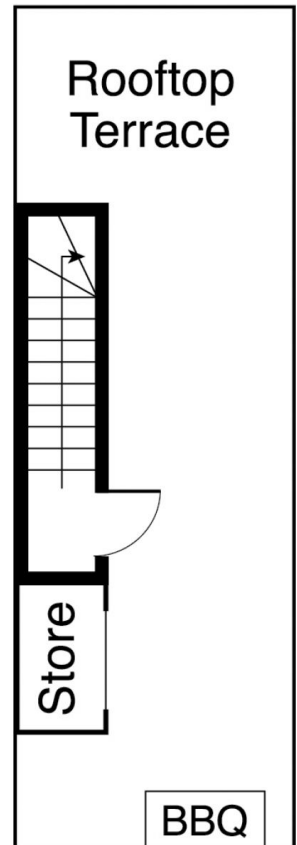
Graeme Wilson
0418315645
gwilson@wilsonagents.com.au



Lower Level



Upper Level



(Not To Scale and
Not In Position)