

38 Inkerman Street ST KILDA

LEASED!

Shop 38 Inkerman St, St Kilda

Rare opportunity for astute experienced operator to secure this outstanding near new fully fitted café of approx. 62 sq. m. located on ground floor of 5 storey apartment development – perfectly positioned next door to the uber cool Newmarket Hotel and surrounded by many upmarket residential and commercial developments.

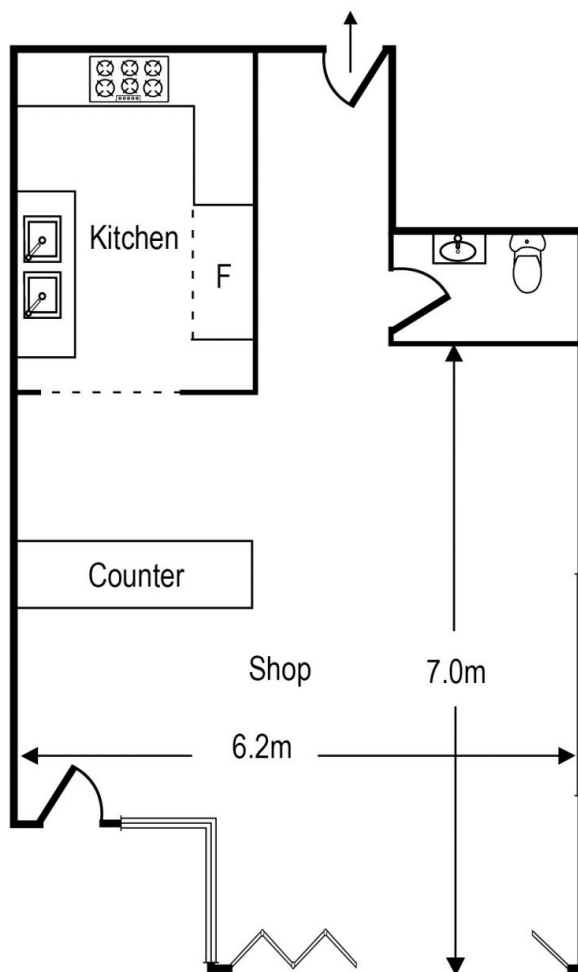
Also features glass bi-fold doors, café permits in place (currently day time trade only) as well as grease trap, full kitchen, plus all equipment as photographed already in place. Secure on site car parking for 3 included. Rental: \$39k p.a. INCLUDES outgoings, plus GST). Available Now – Inspection By Appointment.

Nicole Scrofani
0411 224 451
nscrofani@wilsonagents.com.au

38 Inkerman St, St Kilda



Total Area - 62 SQM Approx



Whilst every attempt has been made to ensure the accuracy of this floorplan, measurements of doors, windows, rooms and any other items are approximates only. The producer or agent cannot be held responsible for any errors, omissions or misstatements. This plan is for illustrative purposes only and should be used as such.