



304 Glenhuntly Road ELSTERNWICK

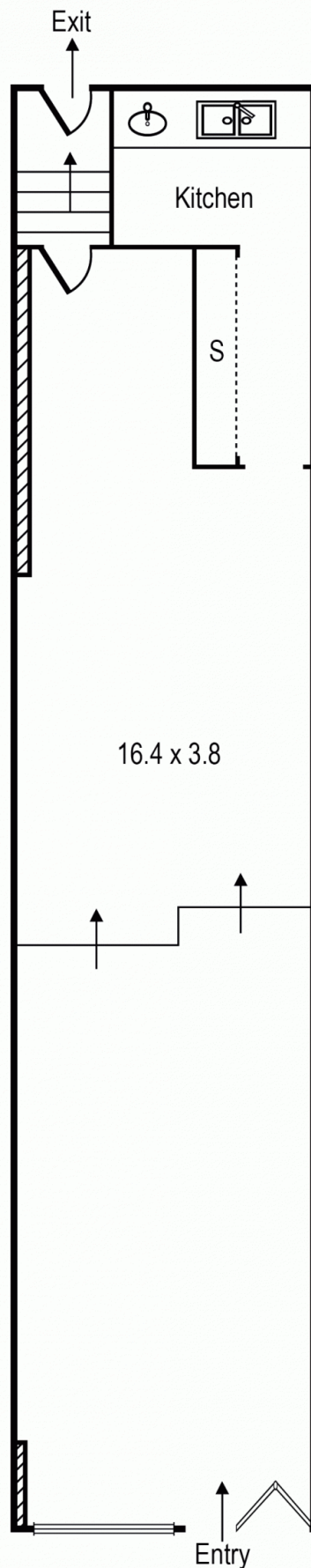
UNDER OFFER!!

Brilliantly located in the heart of vibrant Glenhuntly Road, Elsternwick, terrific retail premises of approx. 62 sq. m. Includes private kitchen amenities, well located with public transport & ample public car parking within metres.

Rental: \$36k p.a. plus outgoings (currently NO GST applicable). RENTAL NEGOTIABLE
 "REASONABLE OFFERS CONSIDERED! Available on Long or Short Term Lease"
 Available Now INSPECTION BY APPOINTMENT

Nicole Scrofani
 0411 224 451
nscrofani@wilsonagents.com.au

304 Glenhuntly Road, Elsternwick



Total Area - 62.3 SQM approx

Whilst every attempt has been made to ensure the accuracy of this floorplan, measurements of doors, windows, rooms and any other items are approximates only. The producer or agent cannot be held responsible for any errors, omissions or misstatements. This plan is for illustrative purposes only and should be used as such.