

203/10 Martin Street ST KILDA

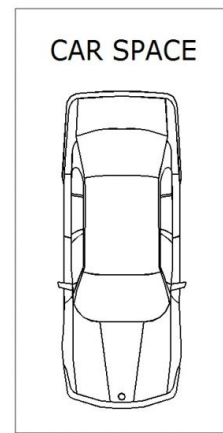
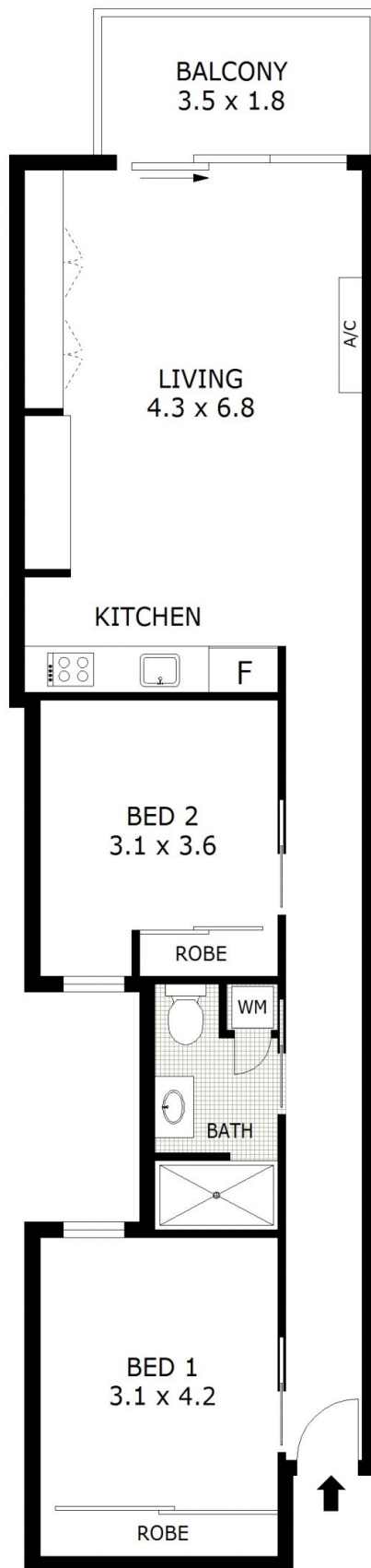
2  **1**  **1** 

Setting the standard

The benchmark for new property has been raised. Blending organic themes with an ultra-modern fit out, this apartment further offers: intercom activated entry and lifts via a stunning and welcoming foyer
Highly functional and spacious floorplan, sleek fixtures and fittings, bedrooms with fully fitted mirrored BIR
Sparkling full bathroom with European laundry, open plan living with wall-mounted split system heating/cooling, large private north facing balcony, superbly equipped hostess kitchen with ample storage, stone benchtops, integrated refrigerator, dishwasher, gas cooktop AND electric oven. Single carpark on a user-friendly and state-of-the-art 'stacker'. PLUS THE BIG BONUS - Head upstairs to the communal entertaining zone with stunning views, kitchen area with split system and lap pool. All this in a AAA address off Chapel Street, just metres from cosmopolitan Carlisle Street. NOTE Long settlement period available till April 2016. Inspection a must as you will be impressed.

\$ 585,000

Peter Fein
0418528888
peter@wilsonagents.com.au



NOT IN POSITION