



## 106/216 Rouse Street PORT MELBOURNE

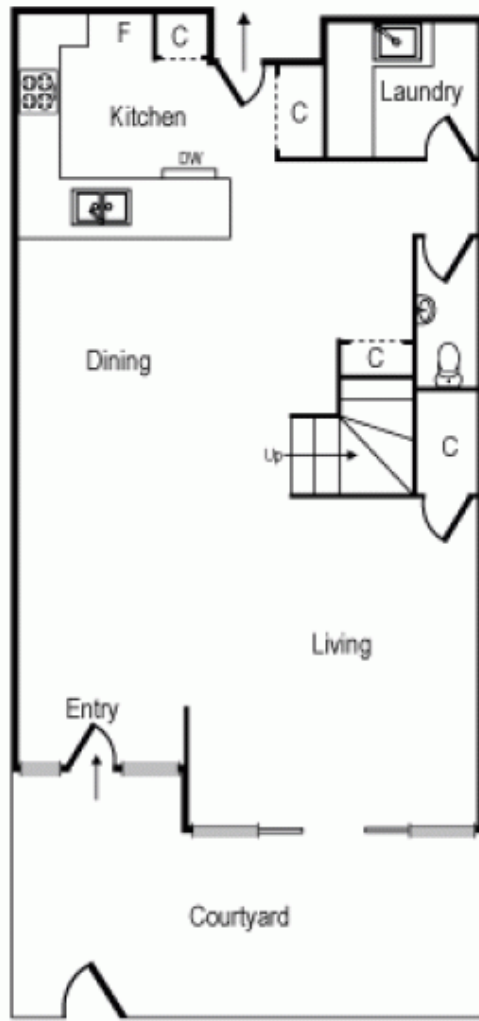
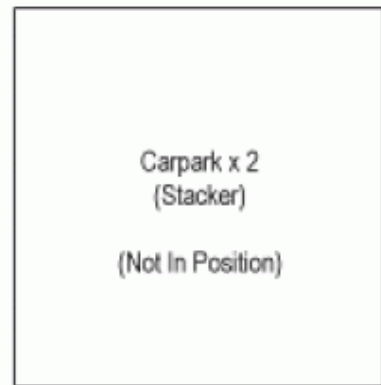
3  2  2 

### Exceptional Quality Living in the Heart of Port Melbourne

\$ 1,200,000

With private street entry and impressive proportions, this two story apartment creates a feeling of townhouse living. With over 125sqm of living space, the generous open plan living & dining zones provide the perfect entertainers domain with direct access to a large courtyard. The kitchen is well appointed and features stone bench tops & stainless steel appliances. The first level is entirely designated to sleeping quarters. Master bedroom with ensuite, WIR, & access to a generous private terrace. Two additional bedrooms both serviced by a central bathroom deliver exceptional comfort levels. Complemented by ducted heating/cooling and the convenience of a separate laundry, separate toilet, storage cage and secure parking for two cars. Only 100m walk to both Port Melbourne Beach & Bay Streets bars, restaurants & cafes this is the epitome of inner city living.

Graeme Wilson  
0418315645  
[gwilson@wilsonagents.com.au](mailto:gwilson@wilsonagents.com.au)



Ground Floor

